



Corporate Office: Adelaide - Australia

Contact Info: Office: +61 8 83625445

Facs: +61 8 83620793

email: info@trackiq.com.au



RailBAM® - Bearing Acoustic Monitor

Using advanced “beam forming” technology the RailBAM® bearing acoustic monitor detects early and advanced bearing defects on rolling stock wheels during train passby at line speed.

Collected data is analysed and forwarded to the user in alert, tabular, graphical and historical formats. Together with these reports and associated wave files bearings are able to be scheduled for change out in a systematic and cost effective manner.

The advanced RailBAM® Trending Data Base is user friendly with automated report functions and scenario settings for bearing and fleet analysis.

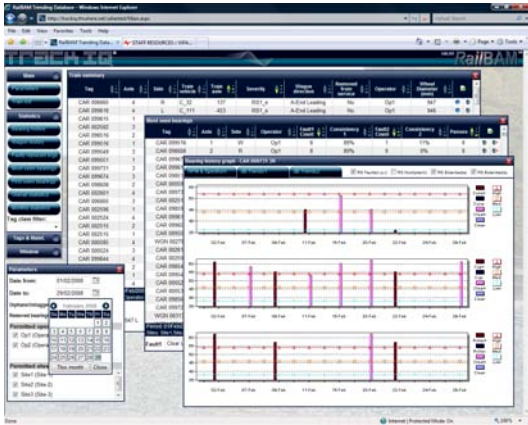
RailBAM® uses two trackside cabinets, sleeper mounted auxiliary sensors and a signal processing electronics rack located in a wayside enclosure.

Monitoring bearing condition in a dynamic environment ensures that maintenance is able to be systematically planned - providing maximum asset performance and security.

Beam forming technology	Yes
Minimal traffic interruption for installation	Yes
Web Based - Trending database	Yes
Multiple bearing classes	Yes
Bearing fault Alarms / Alerts	Yes
Wheel diameter measurement	Yes
Axle count	Yes
AAR rules compliant	Yes
Automated system health checks	Yes
Mixed traffic environment	Yes

Benefits at a glance

- Operating speed 25km/h to 160km/h
- Ability to issue alarms and alerts to system stakeholders
- Early and consistent fault detection
- Reliably detects bearing faults e.g.
 - Extended surface faults
 - Cone faults
 - Cup faults
 - Roller faults
 - Looseness fretting
 - Audible wheel flats
 - Noisy wheel sets
- Provides fleet-wide statistical data



RailBAM® WEB Application - Intelligent Software

The RailBAM® data is presented in the WEB interface - enabling users throughout your enterprise to seamlessly receive vehicle details in “real time” and at their fixed or mobile workstations. User configured alerts allows the system administrator to adapt your reports to the specific needs of stakeholders.

RailBAM® - General Specifications

Capacity	Train Length - Unlimited
	1500 axles for < 5 minute signal processing time
	1 minute train headway (1500 axles)
Vehicle operating speed	25km/h to 160km/h
RF Tags	Suitable for RF tagged vehicles (or virtual tagging reports)
Alarms	User configurable, delivered via SMS, Email or message to Central Train Control
Track Environment	Suitable for single / bi directional track and dual track - close spacing
Fleet	Mixed fleet - heavy haul, inter modal and passenger
Bearing Type	Package, Axle Box and Passenger
Environmental	Rail hardware and Wayside hut equipment suitable for artic, tropical and desert environment
	Rail hardware IP67 rated
Data Base	Supports multi users / different user privileges able to be applied
General	DC / AC power compatible, TCP / IP data transfer, Suitable for electrified environment, all hardware isolated from the rail
Compliance	Outputs in compliance with AAR rules and CE compliant
Standards	Manufactured to ISO9001 quality standard and CE compliant