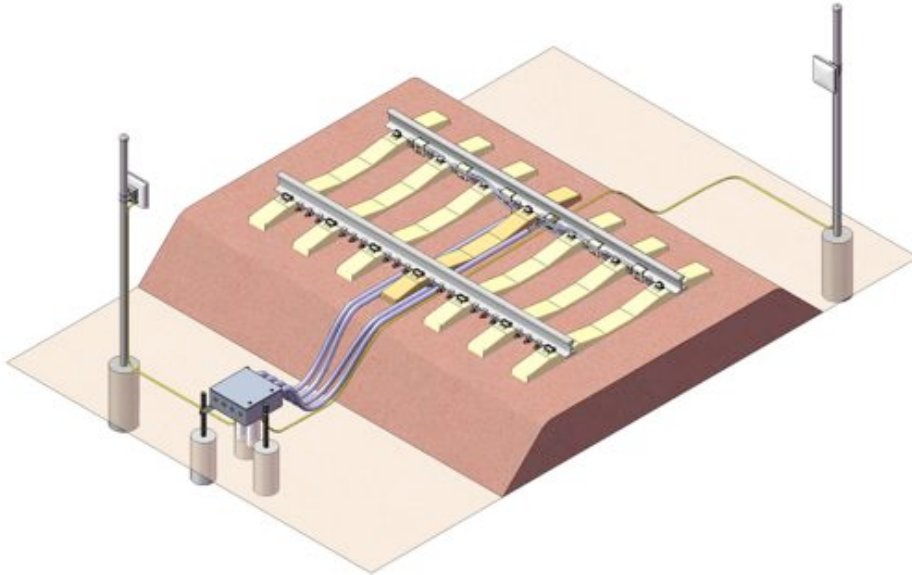


# Wheel Condition Monitor

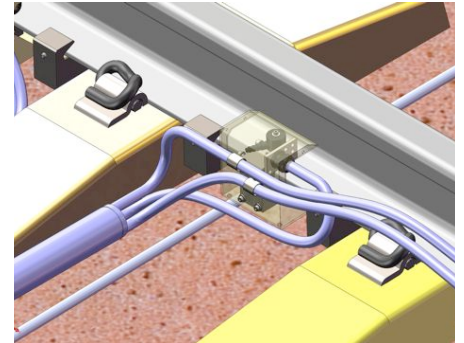


**Corporate Office:** Adelaide - Australia

**Contact Info:** Office: +61 8 83625445

Facs: +61 8 83620793

**email:** [info@trackiq.com.au](mailto:info@trackiq.com.au)



## Wheel Condition Monitor

Rolling wheel contact surface condition is able to be measured to unsurpassed accuracy using the Track IQ™ Wheel Condition Monitor (WCM®).

The WCM® provides accurate and repeatable data on wheel surface condition, out of round wheels and vehicle weights.

All installation mounts are clamp on - minimizing traffic interruption during installation and reducing maintenance times and providing significantly lower whole of life cost.

The Wheel Condition Monitor is delivered with the Wayside Monitoring System - a pre-installed, dedicated software package that analyses and trends captured wheel data. All Wheel Condition Monitors are “systems ready” - ensuring rapid introduction into your railway network.

All on-track components are electrically triple isolated, protected by stainless steel covers and mounted below the rail foot, reducing the opportunity of damage by dragging equipment. Located over six cribs, each section is electrically and mechanically isolated; the ability to service / maintain individual crib sections reduces costs and downtime.

Modular design	Yes
Minimal traffic interruption for installation	Yes
Trending database	Yes
Suitable for electrified environment	Yes
Alarms / Alerts	Yes
AAR rules compliant	Yes
Routine track maintenance without removal	Yes
Suitable for standard track structure	Yes

### Benefits at a glance

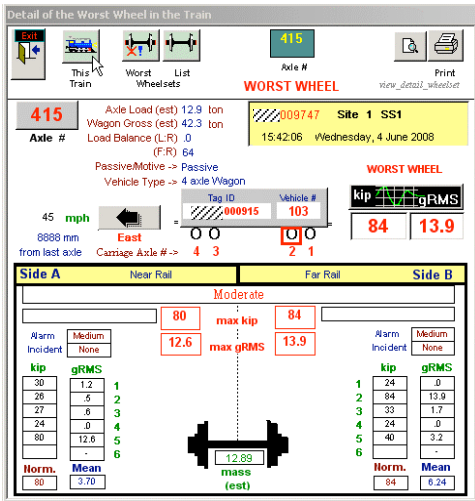
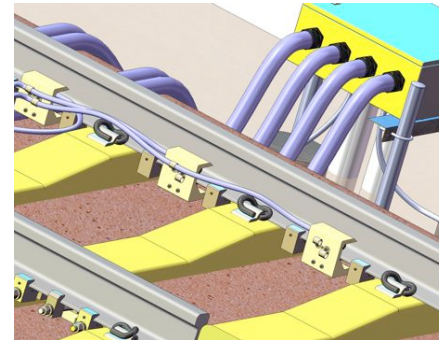
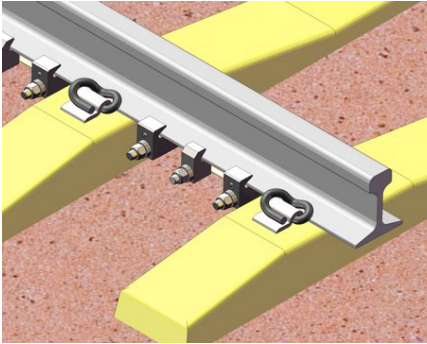
- Operating speed 20km/h to 250km/h
- Four hour track installation window (as traffic permits)
- Defect detection resolution of 3mm diameter.
- Provides “out of round” wheel detection
- Measure vehicle weights / load imbalance
  - Fore / Aft
  - Left / Right
- Modular components reducing installation and maintenance times
- Auto compensation for track modulus variations
- Ability to issue alarms and alerts to system stakeholders

**TRACKSIDE INTELLIGENCE PTY LTD** 17-19 King William Street, Kent Town, South Australia, AUSTRALIA 5067

[www.trackiq.com.au](http://www.trackiq.com.au)

WCM® and Track IQ™ are registered marks of Trackside Intelligence Pty Ltd

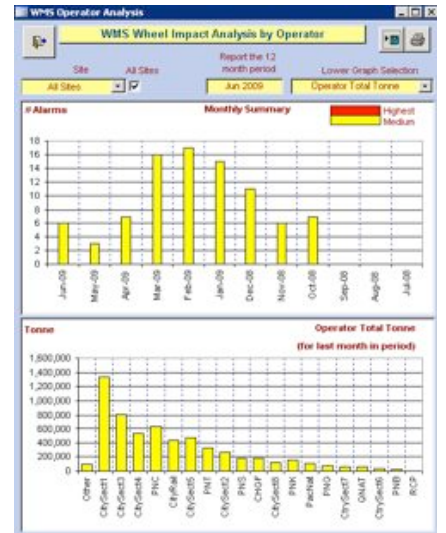
Form WCM00-July09



### Wayside Monitoring System - Intelligent Software

The Wheel Condition Monitor results are able to be viewed at the Fleet, Depot, Vehicle and Wheelset level.

The WCM® is installed with a fully functional database providing alarms, trending, data integration and fault modeling / analysis.



## WCM® - General Specifications

Capacity	Train Length - Unlimited
	2 minute train headway (1500 axles)
Vehicle operating speed	20km/h to 250km/h
RF Tags	Supports RF tagged vehicles (or virtual tagging)
Alarms	User configurable, Impacts to 5 levels, Loads to 3 levels plus Lateral Imbalance to 3 levels
Resolution	2mm spall detection
	Out of Round wheels detected down to 0.3mm runout
	Bogie vehicle weights - fore / aft - left / right to 5% accuracy
Environmental	Rail hardware suitable for arctic, tropical and desert environment
	Wayside rack mounted equipment suitable for arctic, tropical and desert environment
	Rail hardware IP67 rated
Shipping weight	Nominally 600kg
Compliance	Outputs in compliance with AAR Interchange Rule 41 and CE compliant